

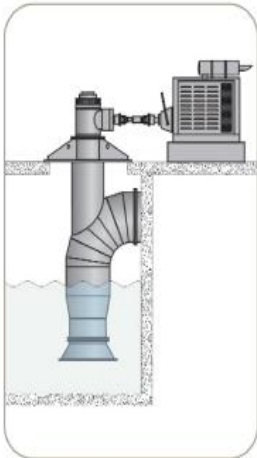
# Inspections

# Rating Analysis

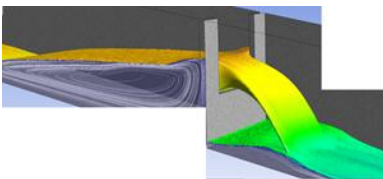
# Flow Calibrations



**INSPECTIONS**



**FLOW CALIBRATIONS**



**RATING ANALYSIS**

With more than 20 years of professional experience, **MW Engineering, Inc.**, specializes in Civil, Mechanical, and Water Resources Consulting and Engineering, for municipal, industrial and agricultural customers.

In support of South Florida Water Management District's *Best Management Practices* program, **MW Engineering** is approved to perform pump calibrations and flow verifications per Chapter 40E-63 of the Florida Administrative Code, at sites within the Everglades Agricultural Area.

### **FLOW CALIBRATION VERIFICATION SERVICES INCLUDE:**

- Type 1 - Well Defined Pump Configurations
- Type 2 - Poor Defined Pump Configurations
- Type 3 - Vertical Lift Box Pump Weir Configurations
- Parabolic and Linear Discharge Flow Equation Development
- Review of Historical Data Through Calibration Approval

### **RELATED SERVICES INCLUDE:**

- Mechanical Inspection
- Pump Station Design and Flow Rating
- Sump Analysis and Redesign
- Mechanical Failure Assessment
- Trend Analysis for Preventative Maintenance

**Mark Weber, PE** is licensed by the State of Florida to offer Consulting and Engineering services. As engineers not contractors, our staff is uniquely qualified to identify the most practical and cost effective solutions to your project constraints.

**State of Florida Licensed Professional Engineer**

**YOUR CONTACT:**

**Mark Weber, P.E.**  
License #53895

Phone: 561-305-0476  
[MarkWeber@MwEngineering.net](mailto:MarkWeber@MwEngineering.net)

For more information please visit [MwEngineering.net](http://MwEngineering.net)